

# DC66P

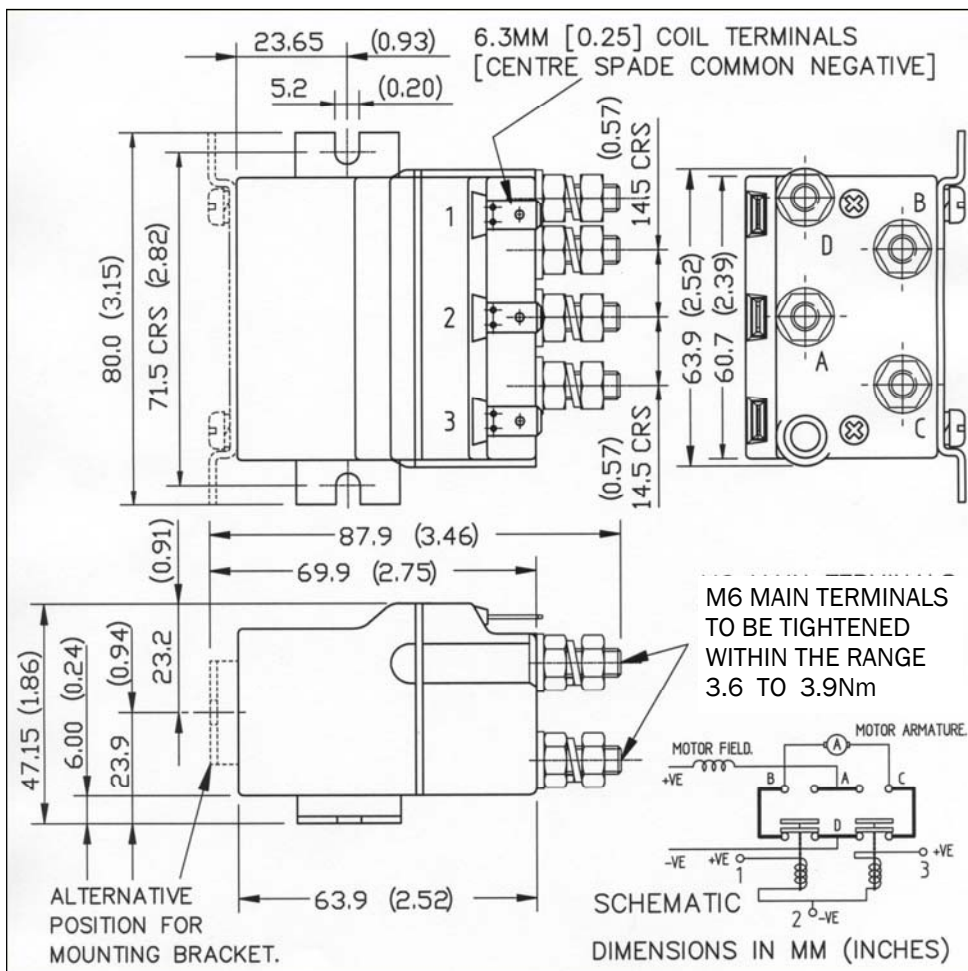
## HEAVY DUTY D.C. CONTACTORS FOR ELECTRIC VEHICLES & OTHER HIGH CURRENT APPLICATION

*Albright* International announces a new addition to the SW60 range of 80 Ampere Contactors: **The DC66P.**

This compact contactor follows the established design of the mono-block contactors which are configured specifically for motor reversing.

The DC66P is sealed to IP66 standards and is ideally suitable for use with small battery powered winches, vehicle mounted cranes, small electric vehicles, etc.

These contactor variants are an innovative & unique introduction from the World's leading manufacturer of DC Contactors.



### PERFORMANCE DATA

<b>Thermal current Rating (100%):</b>	Up to 80 Ampere
<b>Reduced Duty Cycle Rating:</b>	30% - 150 Ampere 40% - 125 Ampere 50% - 115 Ampere 60% - 105 Ampere 70% - 95 Ampere
<b>Typical Inductive Fault Currents that can be ruptured (5ms time Constant):</b>	500 Amperes at 60V D.C.
<b>Maximum Recommended Contact Voltages:</b>	48V D.C.
<b>Typical Voltage Drop across New Contacts:</b>	15mV
<b>Mechanical Life:</b>	>3,000,000
<b>Coil Power Dissipation:</b>	
Intermittently Rated Types (50% Duty Cycle):	10 - 14 Watts
Intermittently Rated Types (25% Duty Cycle):	14 - 21 Watts
Continuously Rated Types:	5 - 7 Watts
<b>Maximum Pull-in Voltage (Coil at 20°C):</b>	
Intermittently Rated Types:	60%V
Continuously Rated Type:	66%V
<b>Typical Drop-out Voltage:</b>	10-25%
<b>Typical Pull-in time (n/o contacts to close):</b>	15ms
<b>Typical Drop-out time (n/o contacts to open):</b>	
Without Suppression:	6ms
With Diode Suppression:	35ms
<b>Typical Main Contact Changeover Time:</b>	
Normally Closed to Normally Open:	6ms
Normally Open to Normally Closed:	6ms
<b>Typical Contact Bounce Period:</b>	3ms

**Please Note:** All Performance data provided should be used as a guide only. Some de-rating or variation from these figures may be necessary according to type and application.

Tecknowledgey Inc.  
8 John Walsh Blvd  
Peekskill, NY 10566  
Phone: 914-739-4499  
info@tecknowledgey.com  
www.tecknowledgey.com

*Albright*  
INTERNATIONAL

Albright is registered under BS EN ISO 14001—Environmental Management System. Should you require information on the disposal of our products, please contact the Health, Safety & Environmental Manager of your Local Supplier for Disposal Guidance Note.