

EXTENSION JIB

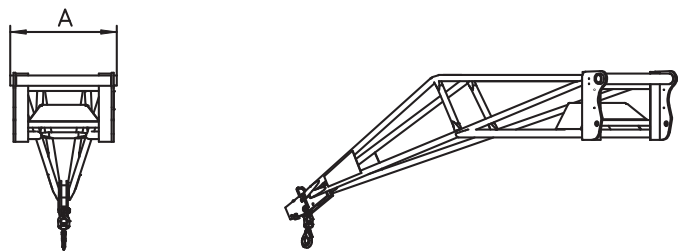
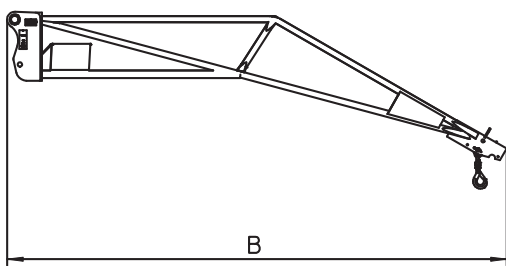
SUSPENDED LOADS HANDLING Solutions

ADVANTAGES

- Simple and light solution for handling suspended loads.
- Perfect for transporting and placing beams, frames and other light and bulky elements.
- Its design allows to reach narrow areas and improves the forward reach of the telehandler.
- Tubular structure designed for an optimal weight/rigidity ratio.

TECHNICAL CHARACTERISTICS

- Wide range of jib from 600 kg to 2000kg with a forward reach max. from 4 m to 2.5 m.
- Safety: homologated swivel self locking hook.
- Extension jib also available in winch version.



	Capacity (kg)	A	B	Weight (kg)
P 600	600	830	3950	210
P 1000	1000	830	3950	210
P 1500	1500	830	2820	186
P 2000	2000	830	2530	190

COMPATIBILITY*

	P600	P 1000	P 1500	P 2000
Part Number MT	653228	N/A	N/A	N/A
MT 625				
MT 732	X			
MT 835	X			
MT 1030	X			
MT 1135	X			
MT 1235	X			
MT 1335	X			
MT 1440	X			
MT 1740	X			
MT 1840	X			
Part Number MRT	710055	710056	710058	710059
MRT EASY (€ 3A)	X	X	X	X
MRT PRIV	X	X	X	X
Part Number MRT+	921316	921317	921319	921320
MRT EASY (€ 3B)	X	X	X	X
MRT + PRIV	X	X	X	X

* This Attachment has been approved for the MT and MRT listed above. A load chart Machine/Attachment has been created accordingly.

This brochure describes versions and configuration options for Manitou products which may be fitted with different equipment. The equipment described in this brochure may be standard, optional or not available depending on version. Manitou reserves the right to change the specifications shown and described at any time and without prior warning. The manufacturer is not liable for the specifications given. For more information, contact your Manitou dealer. Non-contractual document. Product descriptions may differ from actual products. List of specifications is not comprehensive. The logos and visual identity of the company are the property of Manitou and may not be used without authorisation. All rights reserved. The photos and diagrams contained in this brochure are provided for information only. MANITOU BF SA - Limited company with board of directors - Share capital: 39,547,824 euros - 857 802 508 RCS Nantes

P_EXT_EN_A_0413



www.manitou.com